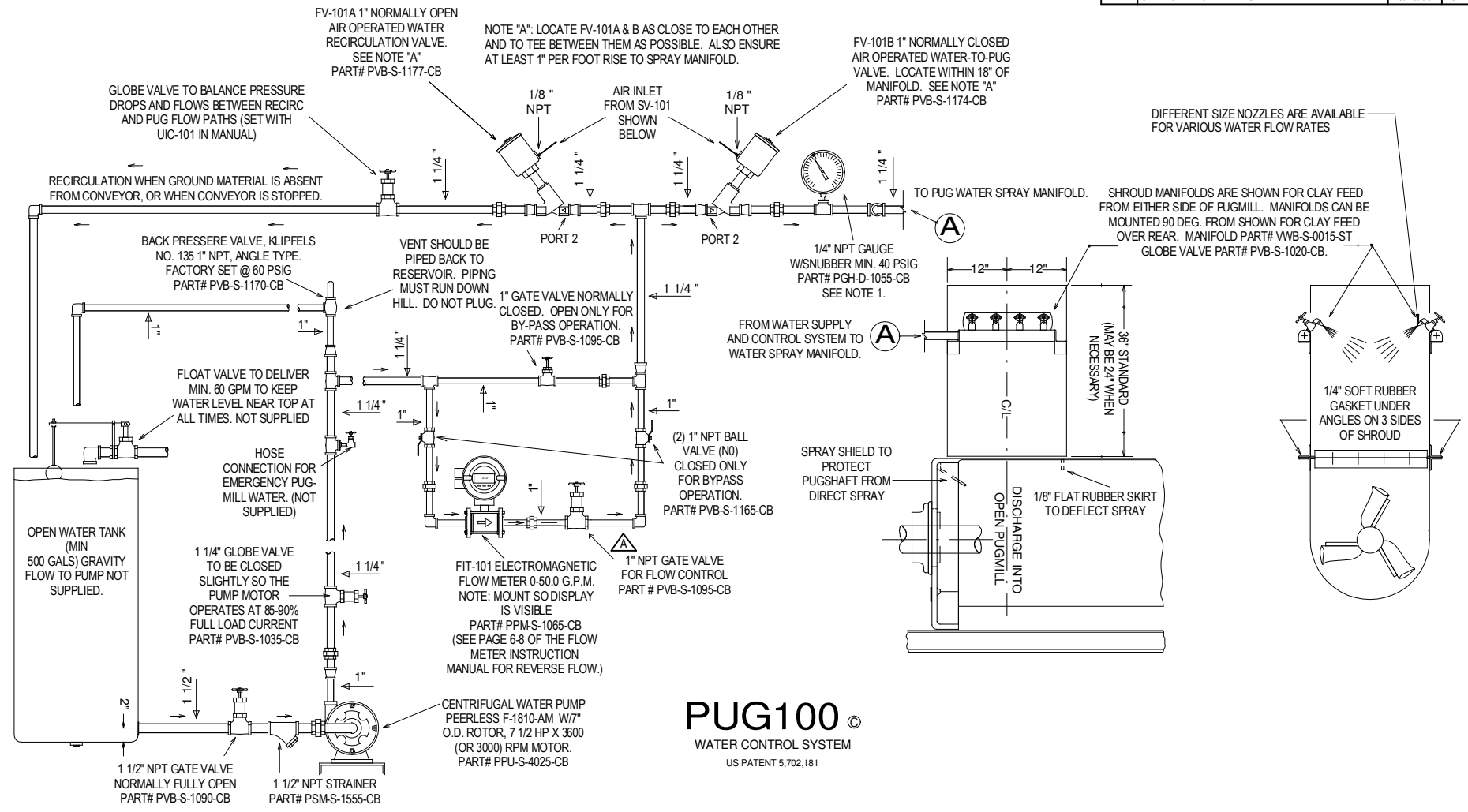


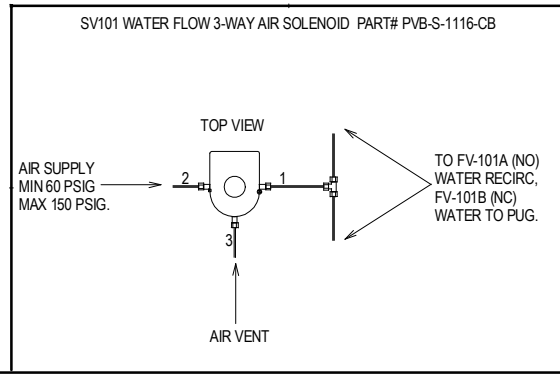
REV	DESCRIPTION	DATE	BY
A	CHANGED TO 1" NPT GATE VALVE	8/15/03	JLB



PUG100[®]

WATER CONTROL SYSTEM
US PATENT 5,702,181

- NOTES:**
- 1: EACH MANIFOLD HAS FOUR "SPRAYING SYSTEMS" CONSISTING OF SIMPLE BLOCK VALVES USED TO CLOSE OFF UNNECESSARY NOZZLES, WHICH INCREASES MANIFOLD PRESSURE AND IMPROVES ATOMIZATION OF WATER. THESE VALVES SHOULD NOT BE USED TO REDUCE OR INCREASE WATER FLOW. 40 PSIG RECOMMENDED AT MANIFOLDS.
 - 2: EXAMPLE: CAPACITY EACH TT5040 NOZZLE FOR BEST SPRAY AT NOZZLES:
NOZZLES AVAILABLE FROM
1/2 GPM TO 7 GPM.
- | | | | |
|------|-----|-----|-----|
| PSIG | 30 | 40 | 60 |
| GPM | 3.5 | 4.0 | 4.9 |
- 3: GALVANIZED PIPE RECOMMENDED
 - 4: PIPE FLOW CONTROL AND DIVERTING VALVES AS WELL AS FLOW METERS WITH ARROWS ON UNITS POINTING IN DIRECTION OF LOCAL FLOW



NOTE: THIS DRAWING REPLACES SK-96-48

<small>THIS DRAWING AND THE INFORMATION HEREIN ARE THE SOLE PROPERTY OF J.C.S. & S. IT MAY NOT BE USED OR REPRODUCED WITHOUT THE WRITTEN CONSENT OF J.C.S. & S.</small>		STEELE		J.C. STEELE & SONS 710 SOUTH MULBERRY STREET STATESVILLE, N.C. 28677 U.S.A. <small>(704) 872-3681 - FAX (704) 878-0786 - http://www.jcsteele.com</small>	
MACHINE: ALL PUG MACHINES		PUG 100 WATER CONTROL SYSTEM COMPONENT LAYOUT			
MATERIAL:		CUSTOMER			
TREATMENT:		SIZE: C SCALE: NONE RELEASED: 09/28/01 SHEET: 1 OF 1			
DRAWN BY: JEF	DATE: 09/28/01	P100-080			
CHECKED BY:	DATE:	DRAWING NUMBER:			
PATTERN NO:		REV: A			
PART NO:					
PART CODE:					